

Application

Roof exhaust fans RF / EC are intended for room ventilation with low air pollution. They are used, among others, in:

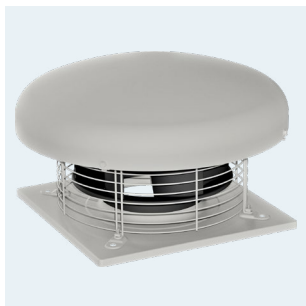
- building exhaust systems residential, supermarkets,
- industrial halls, workshops, warehouses, toilets,
- garages, parking lots, farm buildings and others.

Construction

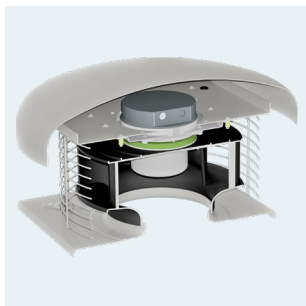
- rotors with backward curved blades, made of plastic,
- base, upper bowl and others elements are made of aluminum sheet,
- galvanized protective mesh,
- adapted to work in a vertical position,
- installation on flat roofs,
- maximum working temperature +60°C (depending on the model),
- RF/EC EIS - version with electric isolation switch.

Motor

- single-phase power supply 230V, 50Hz or three-phase 400V, 50Hz,
- highly efficient motors with integrated EC technology,
- 0-10V DC control input,
- smooth speed control,
- insulation class B, protection class IP44 (models 125 / L, 125 / H, 160 / L and 250 / L),
- insulation class F, protection class IP54 (models 125 / E, 160 / H, 200, 250 / H, 315S, 315T, 355T, 400T, 450T and 500T),
- degree of protection IP44 (models 125 / L, 125 / H, 160 / L and 250 / L),
- degree of protection IP54 (models 125 / E, 160 / H, 200, 250 / H, 315S, 355T, 400T, 450T and 500T),
- MODBUS RTU communication, see table below.



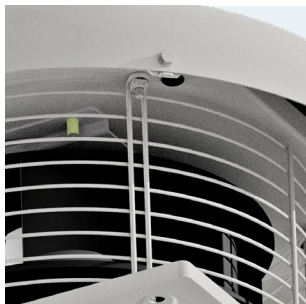
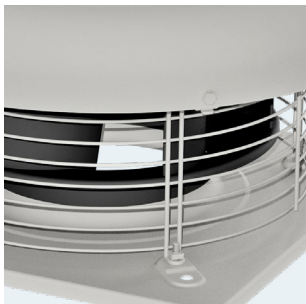
Protective mesh



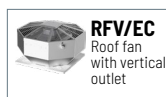
Easy access to the terminal box

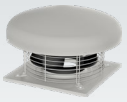


RF/EC EIS - version with electric isolation switch



RELATED PRODUCTS

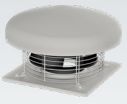




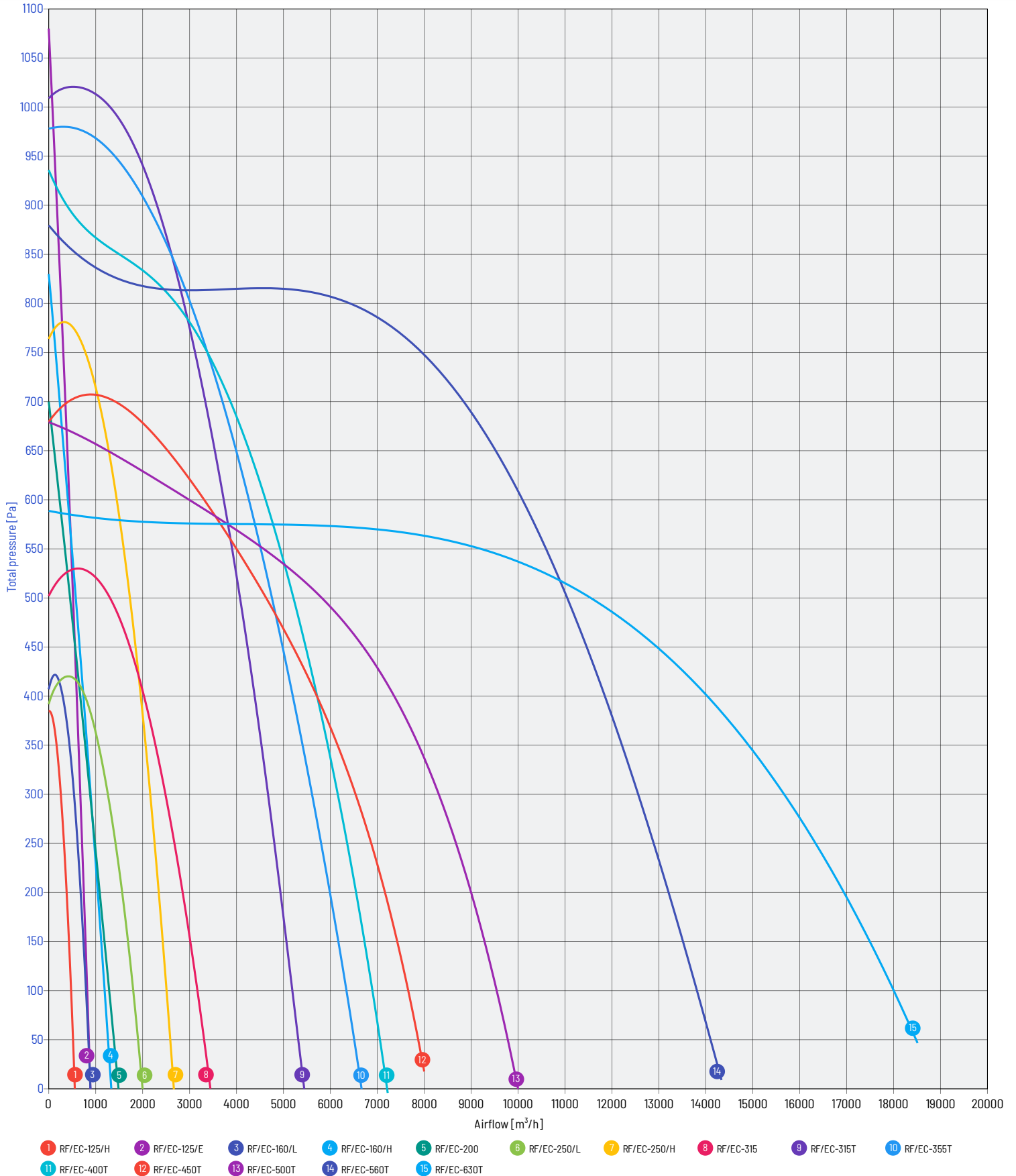
NOMINAL DATA

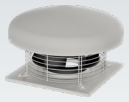
type		airflow max	pressure max	speed	voltage rated	current max absorb.**	power max ab-sorbed	sound power level*	sound pres-sure level*	weight	article number	modbus RTU article number with con-verter	article number with electrical isolation switch
RF/EC-125/H	10V	560 m ³ /h	380 Pa	2 973 rpm	1-230 V	0,5 A	67 W	70 dB(A)	50 dB(A)	3,5 kg	43522912	43532912	43522912-16
	8V	530 m ³ /h	350 Pa	2 400 rpm	1-230 V	0,5 A	56 W	65 dB(A)	45 dB(A)				
RF/EC-125/E	10V	840 m ³ /h	1 080 Pa	4 240 rpm	1-230 V	1,5 A	172 W	74 dB(A)	54 dB(A)	3,6 kg	43522914	43532914	43522914-16
	8,7V	795 m ³ /h	780 Pa	3 680 rpm	1-230 V	1,5 A	154 W	70 dB(A)	51 dB(A)				
RF/EC-160/L	10V	940 m ³ /h	420 Pa	2 830 rpm	1-230 V	0,8 A	117 W	77 dB(A)	57 dB(A)	3,5 kg	43522915	43532915	43522915-16
	7V	840 m ³ /h	350 Pa	1 930 rpm	1-230 V	0,8 A	95 W	68 dB(A)	48 dB(A)				
RF/EC-160/H	10V	1 320 m ³ /h	830 Pa	2 860 rpm	1-230 V	1,5 A	170 W	63 dB(A)	43 dB(A)	4,0 kg	43522918	43532918	43522918-16
	8V	1 240 m ³ /h	530 Pa	2 300 rpm	1-230 V	1,5 A	160 W	58 dB(A)	38 dB(A)				
RF/EC-200	10V	1 500 m ³ /h	700 Pa	2 680 rpm	1-230 V	1,55 A	170 W	67 dB(A)	47 dB(A)	5,5 kg	43522921	43532921	43522921-16
	8V	1 440 m ³ /h	620 Pa	2 200 rpm	1-230 V	1,55 A	155 W	62 dB(A)	42 dB(A)				
RF/EC-250/L	10V	2 050 m ³ /h	410 Pa	2 060 rpm	1-230 V	1,1 A	204 W	77 dB(A)	57 dB(A)	9,0 kg	43522922	43532922	43522922-16
	8V	1 790 m ³ /h	320 Pa	1 650 rpm	1-230 V	1,1 A	160 W	72 dB(A)	52 dB(A)				
RF/EC-250/H	10V	2 700 m ³ /h	780 Pa	2 580 rpm	1-230 V	2,3 A	401 W	74 dB(A)	54 dB(A)	10,0 kg	43522925	built in	43522925-16
	8,6V	2 350 m ³ /h	590 Pa	2 220 rpm	1-230 V	2,3 A	320 W	71 dB(A)	51 dB(A)				
RF/EC-315	10V	3 400 m ³ /h	530 Pa	2 010 rpm	1-230 V	1,58 A	328 W	63 dB(A)	43 dB(A)	11,0 kg	43522931	built in	43522931-16
	9V	3 100 m ³ /h	440 Pa	1 850 rpm	1-230 V	1,58 A	370 W	60 dB(A)	40 dB(A)				
RF/EC-315T	10V	5 400 m ³ /h	1 020 Pa	2 500 rpm	3-400 V	2,1 A	1 113 W	79 dB(A)	59 dB(A)	12,7 kg	43522932	built in	43522932-16
	8V	4 350 m ³ /h	660 Pa	1 900 rpm	3-400 V	2,1 A	710 W	74 dB(A)	54 dB(A)				
RF/EC-355T	10V	6 700 m ³ /h	935 Pa	2 100 rpm	3-400 V	2,4 A	1 350 W	70 dB(A)	50 dB(A)	19,0 kg	43522936	built in	43522936-16
	8V	5 400 m ³ /h	620 Pa	1 700 rpm	3-400 V	2,4 A	745 W	67 dB(A)	47 dB(A)				
RF/EC-400T	10V	7 200 m ³ /h	940 Pa	1 800 rpm	3-400 V	2,5 A	1 380 W	77 dB(A)	57 dB(A)	20,0 kg	43522941	built in	43522941-16
	8V	5 500 m ³ /h	590 Pa	1 450 rpm	3-400 V	2,5 A	810 W	72 dB(A)	52 dB(A)				
RF/EC-450T	10V	8 000 m ³ /h	610 Pa	1 400 rpm	3-400 V	2,1 A	1 145 W	71 dB(A)	51 dB(A)	22,0 kg	43522946	built in	43522946-16
	8V	6 000 m ³ /h	450 Pa	1 120 rpm	3-400 V	2,1 A	690 W	68 dB(A)	48 dB(A)				
RF/EC-500T	10V	10 100 m ³ /h	600 Pa	1 230 rpm	3-400 V	2,6 A	1 405 W	73 dB(A)	53 dB(A)	39,0 kg	43522951	built in	43522951-16
	8V	8 300 m ³ /h	440 Pa	990 rpm	3-400 V	2,6 A	840 W	68 dB(A)	48 dB(A)				
RF/EC-560T	10V	14 300 m ³ /h	880 Pa	1 770 rpm	3-400 V	4,66 A	3 067 W	81 dB(A)	61 dB(A)	53,0 kg	43522955	built in	43522955-16
	8,5V	12 100 m ³ /h	630 Pa	1 500 rpm	3-400 V	2,91 A	1 872 W	77 dB(A)	57 dB(A)				
RF/EC-630T	10V	18 500 m ³ /h	590 Pa	1 200 rpm	3-400 V	4,5 A	2 780 W	76 dB(A)	56 dB(A)	63,0 kg	43522958	built in	43522958-16
	8V	13 500 m ³ /h	380 Pa	960 rpm	3-400 V	4,5 A	1 400 W	71 dB(A)	51 dB(A)				

* Measurement made at a distance of 1.5m from the outlet, for Q = 2/3 * Q_{max}
 ** value of the rated current may vary depending on the manufacturer of the electric motor used.

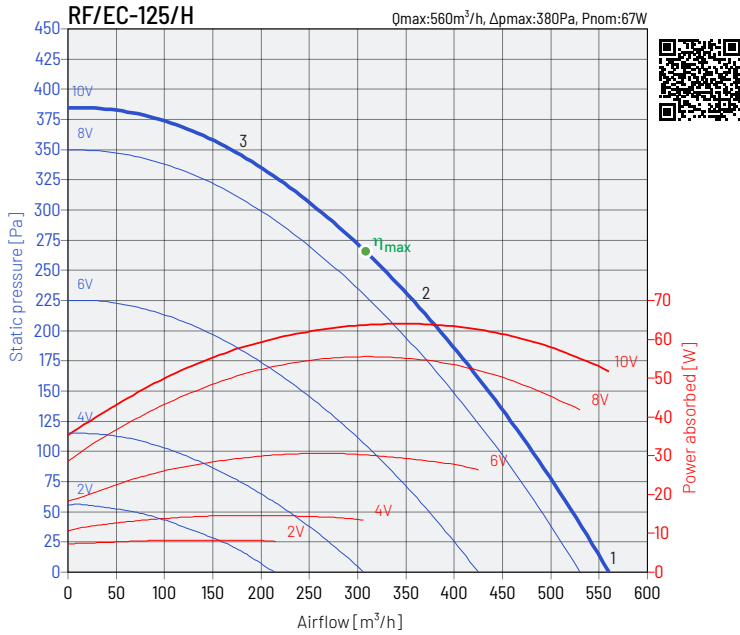


PERFORMANCE CHARACTERISTICS OF THE FANS

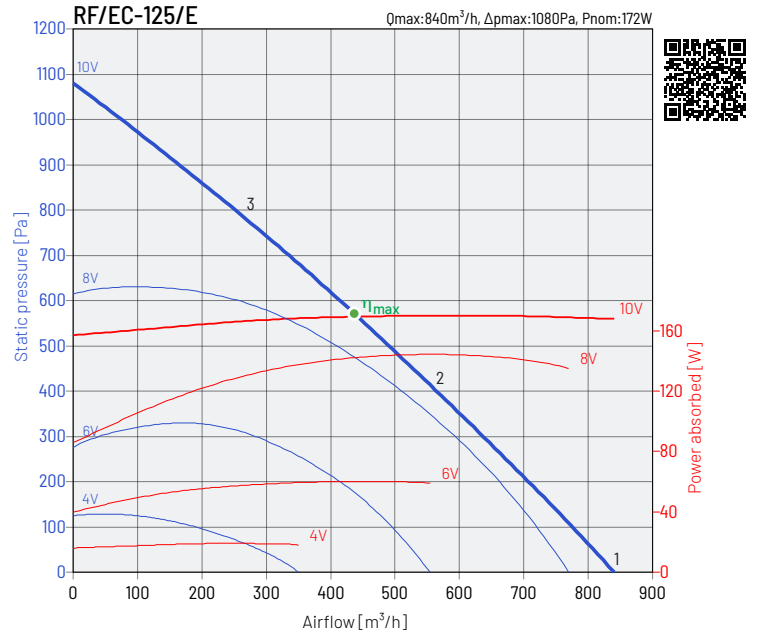




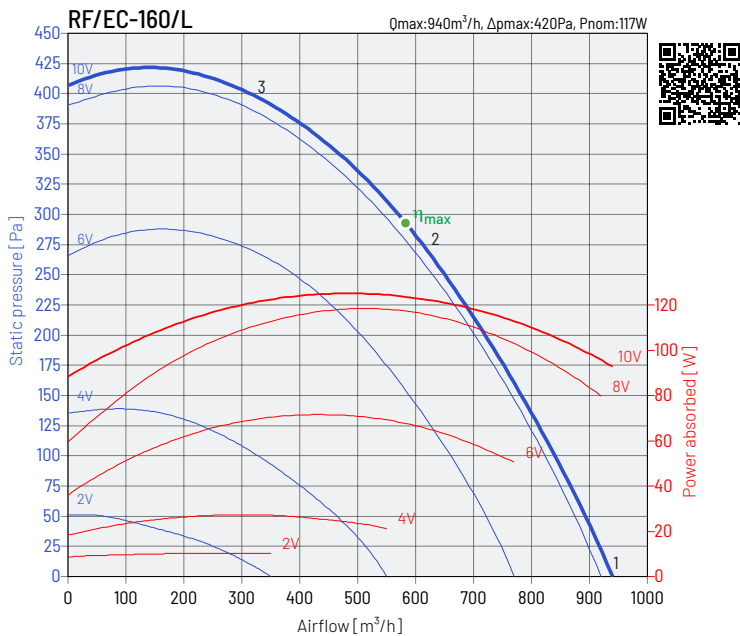
PERFORMANCE CHARACTERISTICS OF THE FANS



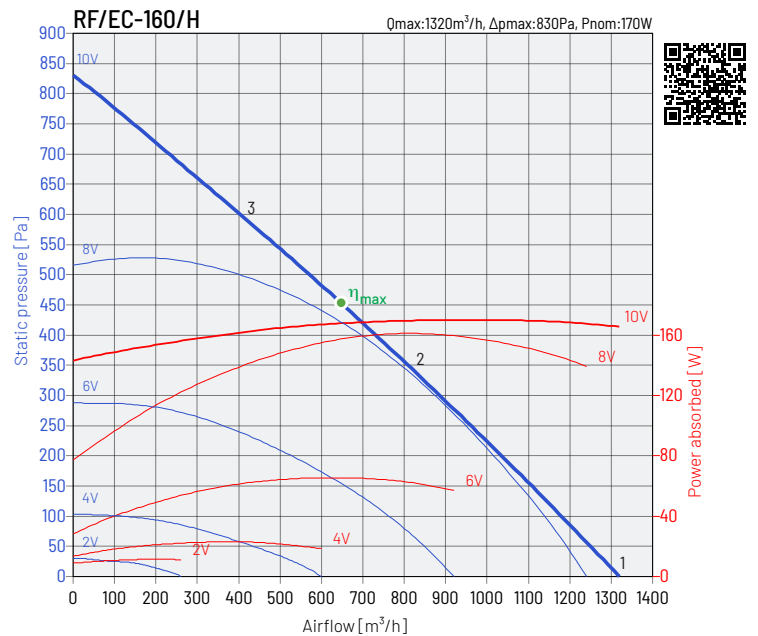
working point	63 Hz	125 Hz	250 Hz	500 Hz	1000 Hz	2000 Hz	4000 Hz	8000 Hz	L_{wa}	
1	inlet	38	51	61	64	68	68	66	59	73
	outlet	41	48	63	65	70	75	70	62	78
2	inlet	37	48	59	61	64	64	63	52	70
	outlet	38	48	60	62	66	70	68	55	74
3	inlet	39	51	63	64	65	64	58	50	70
	outlet	39	51	63	65	67	70	63	53	74



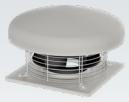
working point	63 Hz	125 Hz	250 Hz	500 Hz	1000 Hz	2000 Hz	4000 Hz	8000 Hz	L_{wa}	
1	inlet	46	51	62	69	74	75	68	67	79
	outlet	45	51	62	69	73	77	73	69	80
2	inlet	40	44	59	66	71	72	66	64	76
	outlet	41	46	56	63	68	73	69	63	76
3	inlet	47	49	61	65	69	69	62	59	74
	outlet	50	51	61	67	71	73	69	63	77



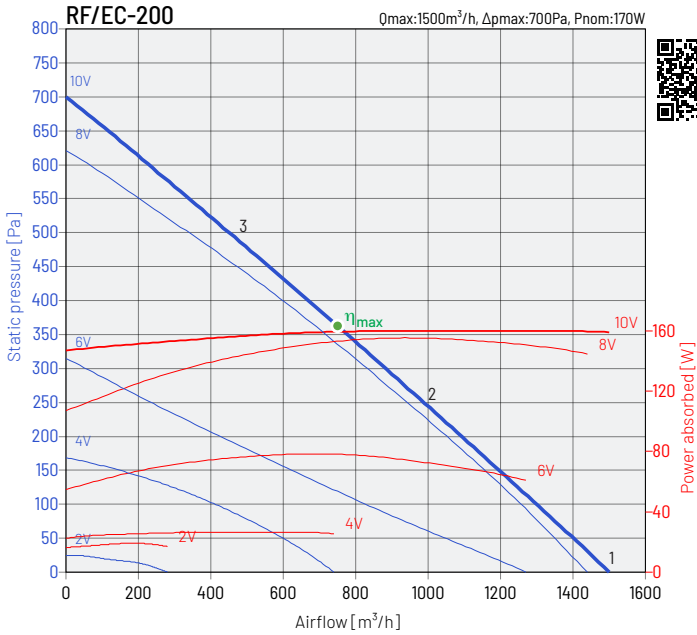
working point	63 Hz	125 Hz	250 Hz	500 Hz	1000 Hz	2000 Hz	4000 Hz	8000 Hz	L_{wa}	
1	inlet	51	55	66	71	75	72	70	71	79
	outlet	50	58	74	77	81	79	73	72	85
2	inlet	51	54	65	70	72	70	68	68	77
	outlet	51	57	74	75	79	76	70	68	83
3	inlet	51	54	65	69	70	68	66	61	75
	outlet	48	56	72	73	77	73	68	62	81



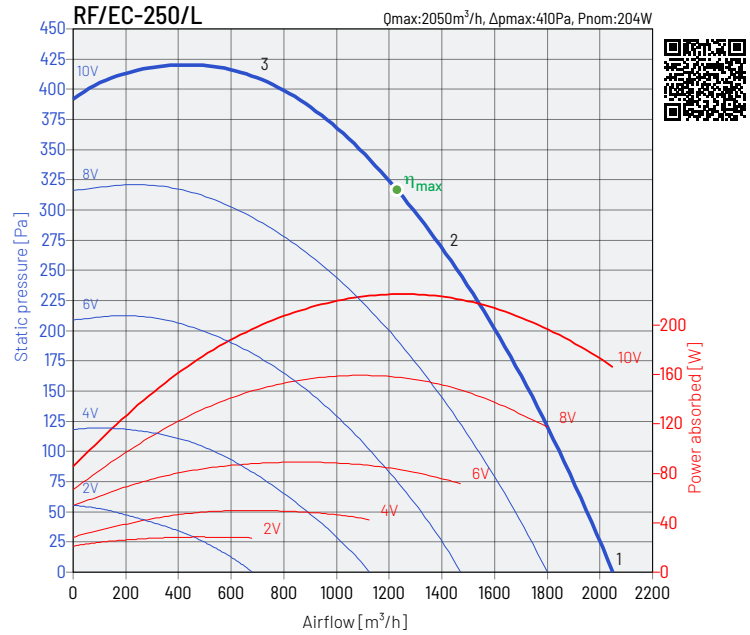
working point	63 Hz	125 Hz	250 Hz	500 Hz	1000 Hz	2000 Hz	4000 Hz	8000 Hz	L_{wa}	
1	inlet	37	49	58	59	61	61	61	65	69
	outlet	35	50	59	62	66	69	64	67	73
2	inlet	33	43	50	55	56	55	55	50	62
	outlet	32	43	51	56	60	63	58	53	66
3	inlet	39	49	57	61	60	58	55	47	66
	outlet	38	49	59	64	64	66	59	52	70



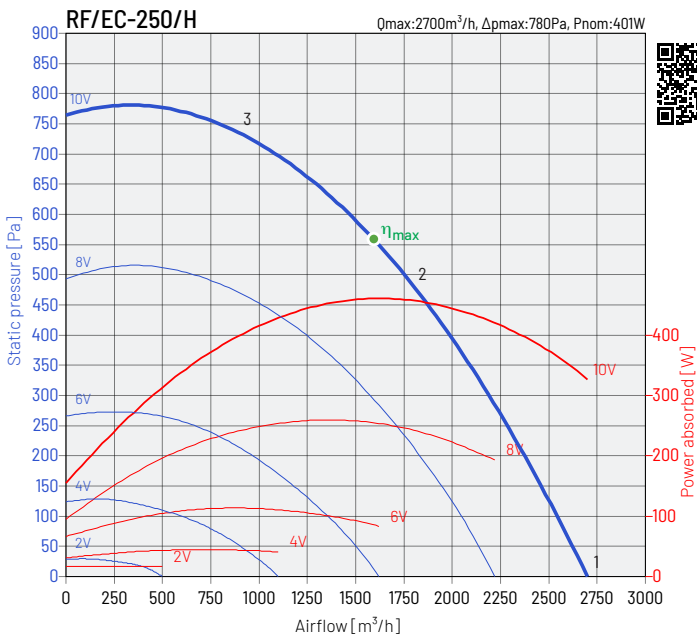
PERFORMANCE CHARACTERISTICS OF THE FANS



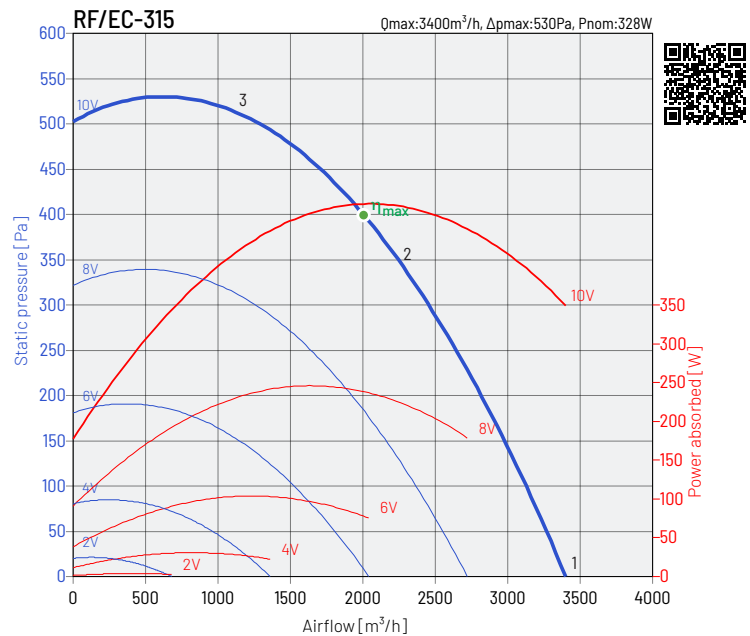
working point	63 Hz	125 Hz	250 Hz	500 Hz	1000 Hz	2000 Hz	4000 Hz	8000 Hz	L_{wa}
1	inlet	41	48	59	63	66	66	72	75
	outlet	39	50	60	65	70	72	68	77
2	inlet	33	43	54	58	61	61	62	63
	outlet	33	45	55	60	65	68	64	72
3	inlet	38	48	55	58	60	58	57	65
	outlet	37	49	56	60	64	66	60	70



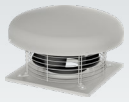
working point	63 Hz	125 Hz	250 Hz	500 Hz	1000 Hz	2000 Hz	4000 Hz	8000 Hz	L_{wa}
1	inlet	51	55	66	71	75	72	70	79
	outlet	50	58	74	77	81	79	73	85
2	inlet	51	54	65	70	72	70	68	77
	outlet	51	57	74	75	79	76	70	83
3	inlet	51	54	65	69	70	68	66	75
	outlet	48	56	72	79	77	73	68	82



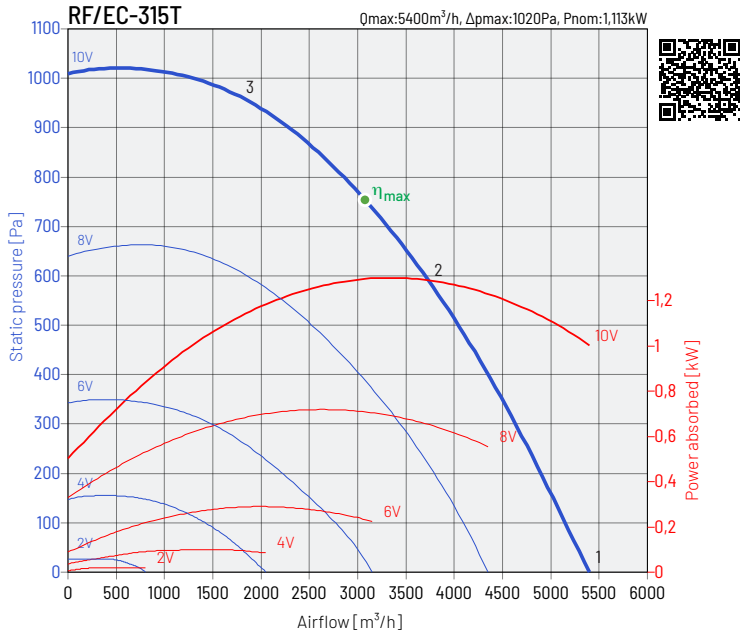
working point	63 Hz	125 Hz	250 Hz	500 Hz	1000 Hz	2000 Hz	4000 Hz	8000 Hz	L_{wa}
1	inlet	44	51	71	76	76	74	74	81
	outlet	45	55	73	79	83	83	80	88
2	inlet	47	52	67	69	68	68	64	75
	outlet	47	55	68	73	77	75	70	81
3	inlet	60	64	77	77	70	70	67	80
	outlet	58	69	84	78	78	78	72	87



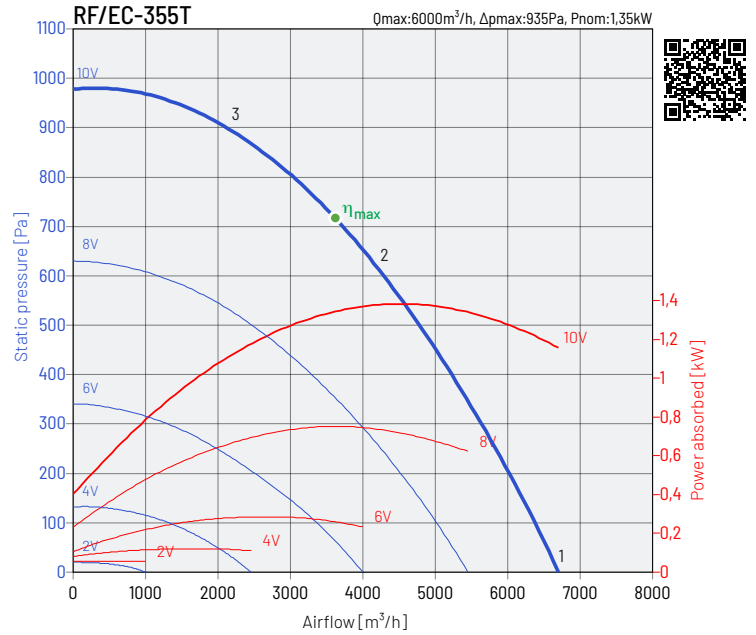
working point	63 Hz	125 Hz	250 Hz	500 Hz	1000 Hz	2000 Hz	4000 Hz	8000 Hz	L_{wa}
1	inlet	40	52	59	64	61	59	58	68
	outlet	39	55	61	67	68	68	63	73
2	inlet	39	48	54	59	56	54	51	63
	outlet	38	51	56	62	63	62	56	68
3	inlet	53	60	64	64	60	58	54	69
	outlet	53	62	66	67	67	64	57	73



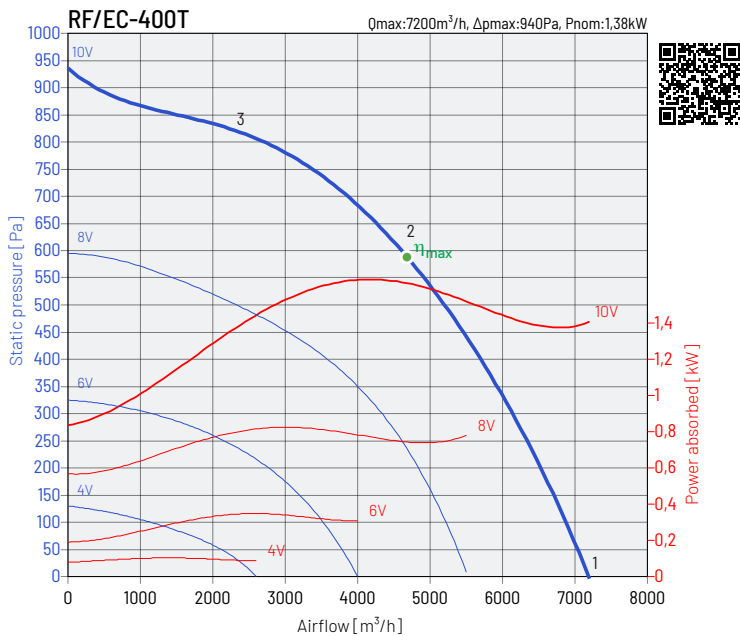
PERFORMANCE CHARACTERISTICS OF THE FANS



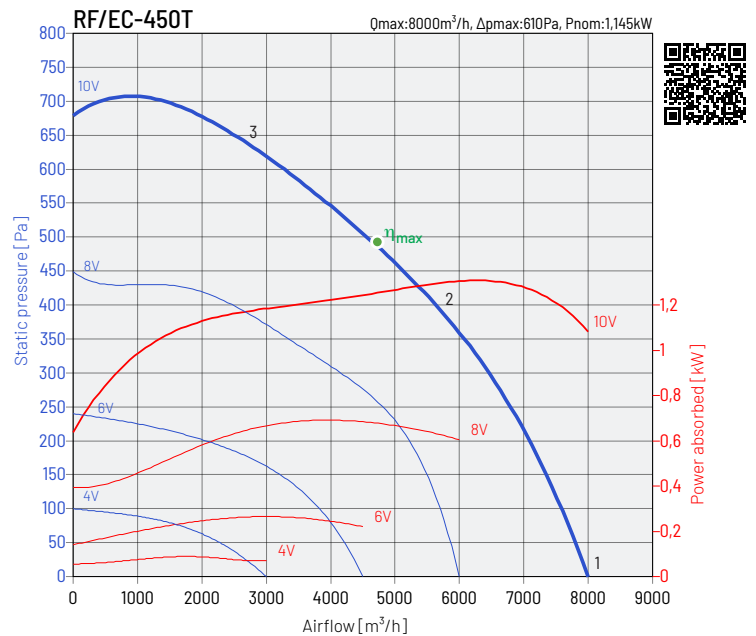
working point	63 Hz	125 Hz	250 Hz	500 Hz	1000 Hz	2000 Hz	4000 Hz	8000 Hz	L_{wa}
1	inlet	49	60	74	79	76	73	68	83
	outlet	49	62	77	82	86	83	73	89
2	inlet	51	62	72	77	73	68	59	80
	outlet	52	64	73	80	83	80	73	86
3	inlet	53	61	68	75	70	67	63	78
	outlet	52	63	72	78	79	72	63	84



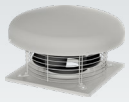
working point	63 Hz	125 Hz	250 Hz	500 Hz	1000 Hz	2000 Hz	4000 Hz	8000 Hz	L_{wa}
1	inlet	44	63	67	72	68	67	66	76
	outlet	43	65	70	76	78	74	71	82
2	inlet	43	58	62	65	62	61	56	70
	outlet	43	60	64	69	72	68	63	76
3	inlet	56	69	69	70	65	62	57	75
	outlet	56	70	73	73	75	70	64	80



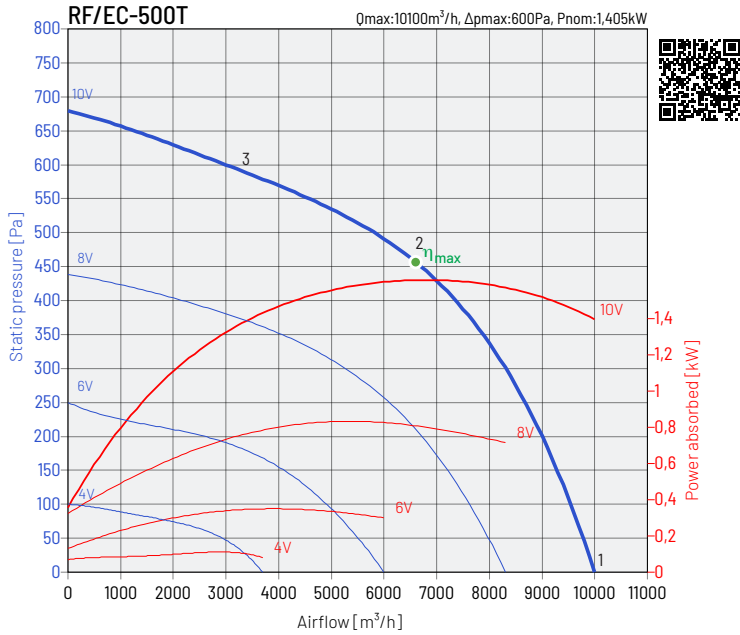
working point	63 Hz	125 Hz	250 Hz	500 Hz	1000 Hz	2000 Hz	4000 Hz	8000 Hz	L_{wa}
1	inlet	48	63	73	76	72	72	69	80
	outlet	49	68	76	81	83	78	74	87
2	inlet	49	62	73	72	68	65	61	77
	outlet	49	63	75	78	79	73	67	83
3	inlet	52	64	73	72	68	65	61	77
	outlet	53	66	76	77	77	71	66	82



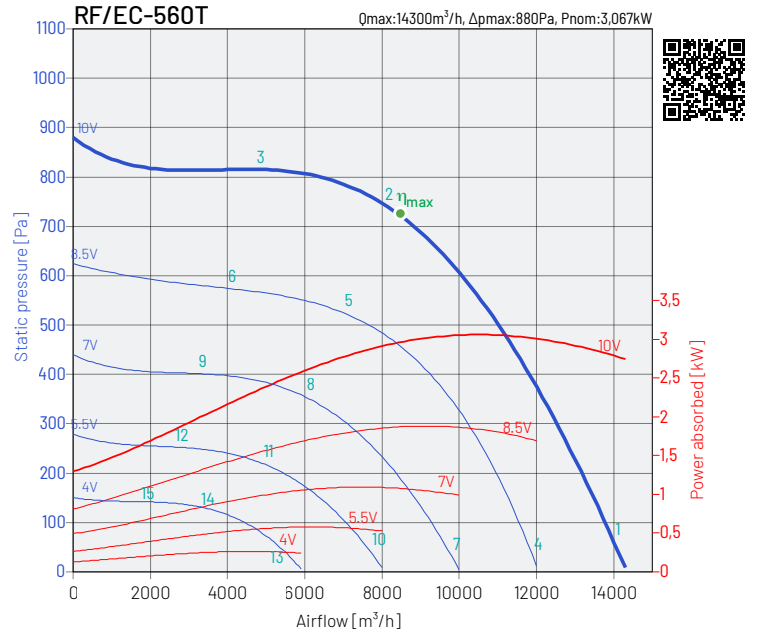
working point	63 Hz	125 Hz	250 Hz	500 Hz	1000 Hz	2000 Hz	4000 Hz	8000 Hz	L_{wa}
1	inlet	46	62	69	71	67	68	66	76
	outlet	47	64	72	77	77	74	72	82
2	inlet	45	62	67	67	64	62	58	72
	outlet	45	62	70	73	73	67	63	78
3	inlet	51	63	69	68	66	63	59	74
	outlet	51	64	74	74	73	68	63	79



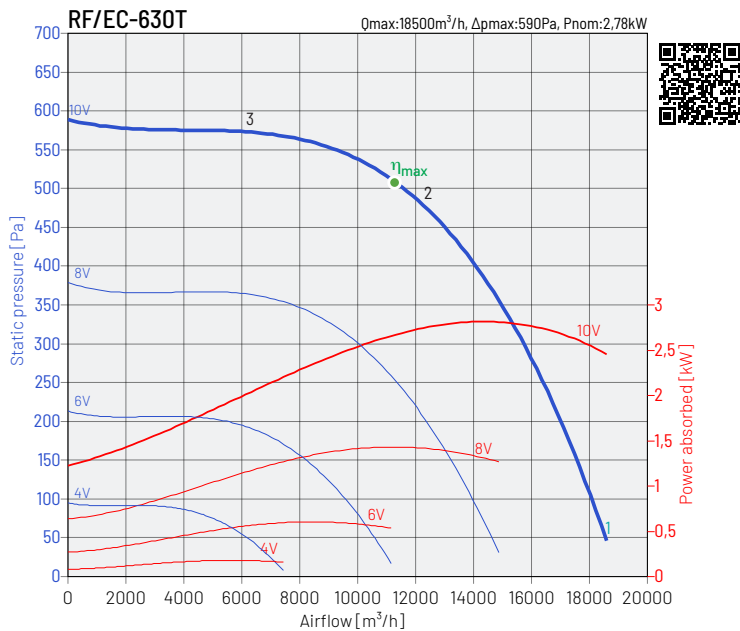
PERFORMANCE CHARACTERISTICS OF THE FANS



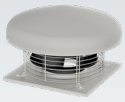
working point	63 Hz	125 Hz	250 Hz	500 Hz	1000 Hz	2000 Hz	4000 Hz	8000 Hz	L_{wa}
1	inlet	46	65	69	67	68	66	72	77
	outlet	49	65	72	74	75	71	70	80
2	inlet	45	60	66	70	70	64	59	75
	outlet	45	60	68	71	71	65	60	76
3	inlet	53	62	68	64	65	60	56	72
	outlet	54	64	70	70	69	65	60	75



working point	63 Hz	125 Hz	250 Hz	500 Hz	1000 Hz	2000 Hz	4000 Hz	8000 Hz	L_{wa}
1	inlet	51	61	74	79	78	78	77	85
	outlet	68	70	82	84	87	84	82	91
2	inlet	51	57	70	74	75	75	73	81
	outlet	53	62	76	79	83	82	80	88
3	inlet	70	74	77	79	79	79	75	86
	outlet	69	77	81	84	88	85	81	92



working point	63 Hz	125 Hz	250 Hz	500 Hz	1000 Hz	2000 Hz	4000 Hz	8000 Hz	L_{wa}
1	inlet	47	63	70	71	72	73	71	79
	outlet	50	71	73	75	77	76	75	83
2	inlet	40	60	66	67	70	71	68	76
	outlet	43	65	67	75	76	75	73	81
3	inlet	41	62	65	67	70	72	68	76
	outlet	44	65	67	75	76	75	72	81

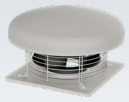


ECO PROJECT

Type	RF/EC-125/H	RF/EC-125/E	RF/EC-160/L	RF/EC-160/H	RF/EC-200
a Supplier name	VENTURE INDUSTRIES	VENTURE INDUSTRIES	VENTURE INDUSTRIES	VENTURE INDUSTRIES	VENTURE INDUSTRIES
b Article number	43522912	43522914	43522915	43522918	43522921
c Device category	NRVU	NRVU	NRVU	NRVU	NRVU
c Device type	UVU	UVU	UVU	UVU	UVU
d Type of drive	variable speed drive v	variable speed drive v	variable speed drive v	variable speed drive v	variable speed drive v
e Type of heat recovery system	not applicable	not applicable	not applicable	not applicable	not applicable
f Thermal efficiency of heat recovery [%]	not applicable	not applicable	not applicable	not applicable	not applicable
g Reference flow rate in NRVU [m ³ /s]	0,1	0,13	0,17	0,19	0,25
h Electric power input [kW]	0,06	0,17	0,13	0,17	0,15
i SFPint [W/(m ² /s)]	644	1247	763	880	617
j Face velocity [m/s]	0,64	0,9	0,94	1,08	1,13
k Δps, ext [Pa]	245	516	317	423	299
l Δps, int [Pa]	not applicable	not applicable	not applicable	not applicable	not applicable
m Δps, add [Pa]	not applicable	not applicable	not applicable	not applicable	not applicable
n Static efficiency of fans [%]	38,00%	41,00%	39,00%	47,00%	48,00%
o Maximum external leakage rate [%]	0	0	0	0	0
p Energy performance	not applicable	not applicable	not applicable	not applicable	not applicable
q Visual filter warning	not applicable	not applicable	not applicable	not applicable	not applicable
r L _{WA} [dB(A)]	67	76	69	73	70
s Internet address	www.ventur.eu	www.ventur.eu	www.ventur.eu	www.ventur.eu	www.ventur.eu

Type	RF/EC-250/L	RF/EC-250/H	RF/EC-315	RF/EC-315T	RF/EC-355T
a Supplier name	VENTURE INDUSTRIES	VENTURE INDUSTRIES	VENTURE INDUSTRIES	VENTURE INDUSTRIES	VENTURE INDUSTRIES
b Article number	43522922	43522925	43522931	43522932	43522936
c Device category	NRVU	NRVU	NRVU	NRVU	NRVU
c Device type	UVU	UVU	UVU	UVU	UVU
d Type of drive	variable speed drive v	variable speed drive v	variable speed drive v	variable speed drive v	variable speed drive v
e Type of heat recovery system	not applicable	not applicable	not applicable	not applicable	not applicable
f Thermal efficiency of heat recovery [%]	not applicable	not applicable	not applicable	not applicable	not applicable
g Reference flow rate in NRVU [m ³ /s]	0,33	0,44	0,83	0,85	0,97
h Electric power input [kW]	0,22	0,44	1,24	1,24	1,27
i SFPint [W/(m ² /s)]	673	1017	1491	1468	1310
j Face velocity [m/s]	1,42	1,91	3,24	3,29	3,08
k Δps, ext [Pa]	320	569	783	771	649
l Δps, int [Pa]	not applicable	not applicable	not applicable	not applicable	not applicable
m Δps, add [Pa]	not applicable	not applicable	not applicable	not applicable	not applicable
n Static efficiency of fans [%]	48,00%	55,00%	53,00%	53,00%	49,5%
o Maximum external leakage rate [%]	0	0	0	0	0
p Energy performance	not applicable	not applicable	not applicable	not applicable	not applicable
q Visual filter warning	not applicable	not applicable	not applicable	not applicable	not applicable
r L _{WA} [dB(A)]	72	78	66	77	75
s Internet address	www.ventur.eu	www.ventur.eu	www.ventur.eu	www.ventur.eu	www.ventur.eu

Type	RF/EC-400T	RF/EC-450T	RF/EC-500T	RF/EC-560T	RF/EC-630T
a Supplier name	VENTURE INDUSTRIES	VENTURE INDUSTRIES	VENTURE INDUSTRIES	VENTURE INDUSTRIES	VENTURE INDUSTRIES
b Article number	43522941	43522946	43522951	43522955	43522951
c Device category	NRVU	NRVU	NRVU	NRVU	NRVU
c Device type	UVU	UVU	UVU	UVU	UVU
d Type of drive	variable speed drive v	variable speed drive v	variable speed drive v	variable speed drive v	variable speed drive v
e Type of heat recovery system	not applicable	not applicable	not applicable	not applicable	not applicable
f Thermal efficiency of heat recovery [%]	not applicable	not applicable	not applicable	not applicable	not applicable
g Reference flow rate in NRVU [m ³ /s]	1,31	1,43	1,99	2,31	1,93
h Electric power input [kW]	1,62	1,35	1,61	2,92	1,61
i SFPint [W/(m ² /s)]	1231	943	808	1266	833
j Face velocity [m/s]	3,87	3,65	4,52	5,66	4,35
k Δps, ext [Pa]	592	467	427	720	425
l Δps, int [Pa]	not applicable	not applicable	not applicable	not applicable	not applicable
m Δps, add [Pa]	not applicable	not applicable	not applicable	not applicable	not applicable
n Static efficiency of fans [%]	48,1%	49,5%	52,8%	56,9%	51,0%
o Maximum external leakage rate [%]	0	0	0	0	0
p Energy performance	not applicable	not applicable	not applicable	not applicable	not applicable
q Visual filter warning	not applicable	not applicable	not applicable	not applicable	not applicable
r L _{WA} [dB(A)]	76	72	72	80	72
s Internet address	www.ventur.eu	www.ventur.eu	www.ventur.eu	www.ventur.eu	www.ventur.eu

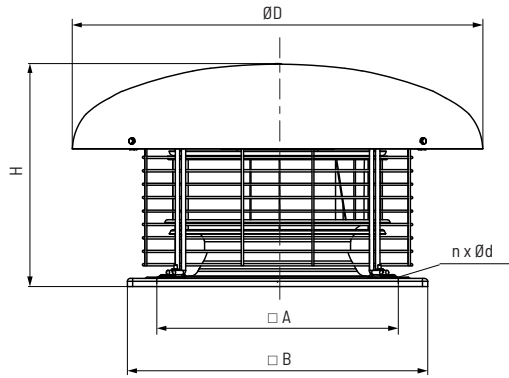


RF/EC Roof fan

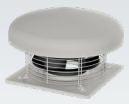
The power of AIR



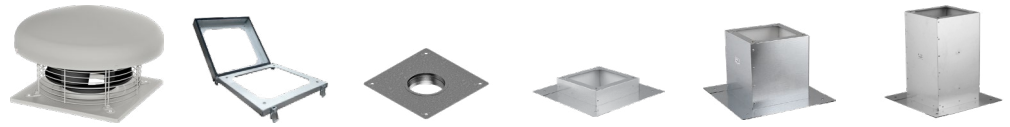
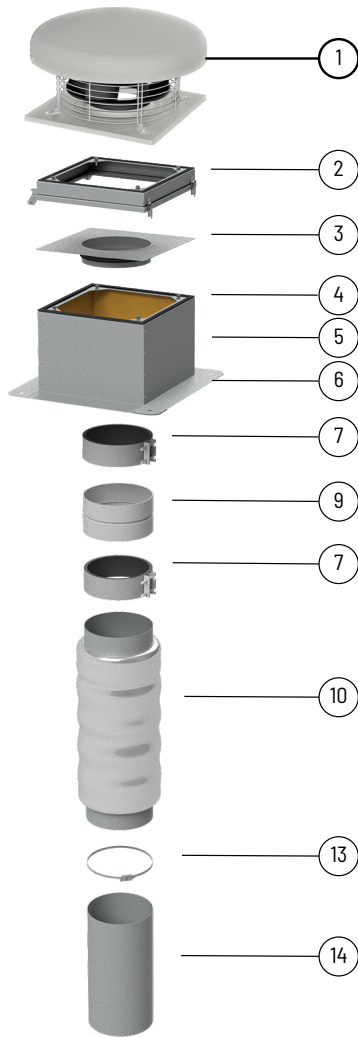
DIMENSIONS



type	A mm	B mm	ØD mm	H mm	Ød mm	n holes
RF/EC-125	245	300	355	191	10	4
RF/EC-160	245	300	355	191	10	4
RF/EC-200	330	435	457	246	12	4
RF/EC-250	330	435	552	316	12	4
RF/EC-315	330	435	552	316	12	4
RF/EC-355	450	560	765	416	12	4
RF/EC-400	450	560	765	416	12	4
RF/EC-450	535	630	765	458	12	4
RF/EC-500	590	710	1000	535	12	4
RF/EC-560	750	900	1306	603	14	4
RF/EC-630	750	900	1306	594	14	4



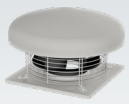
MOUNTING ACCESSORIES - Mounting type A



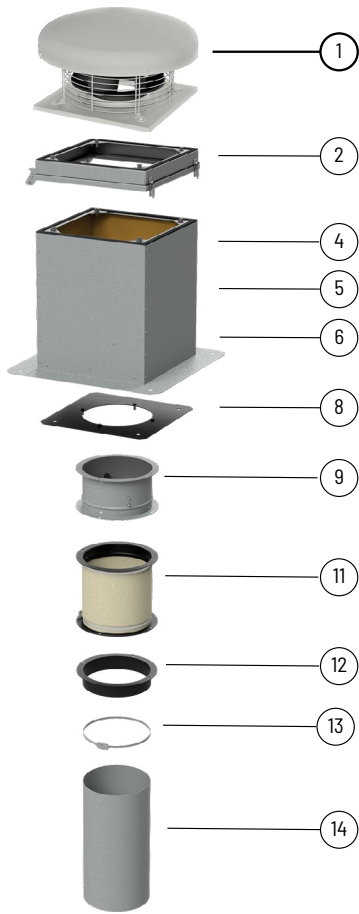
	1	2	3	4	5	6
type	swing module U	plate with stub PZK	flat roof up RSS	flat roof up RS	flat roof up RSA	
RF/EC-125	U 300	PZK-125	RSS 300	RS 300	RSA 300	
RF/EC-160	U 300	PZK-160	RSS 300	RS 300	RSA 300	
RF/EC-200	U 435	PZK-200	RSS 435	RS 435	RSA 435	
RF/EC-250	U 435	PZK-250	RSS 435	RS 435	RSA 435	
RF/EC-315	U 435	PZK-315	RSS 435	RS 435	RSA 435	
RF/EC-355	U 560	-	RSS 560	RS 560	RSA 560	
RF/EC-400	U 560	-	RSS 560	RS 560	RSA 560	
RF/EC-450	U 630	-	RSS 630	RS 630	RSA 630	
RF/EC-500	U 710	-	RSS 710	RS 710	RSA 710	
RF/EC-560	U 905	-	RSS 905	RS 905	RSA 905	
RF/EC-630	U 905	-	RSS 905	RS 905	RSA 905	



	7	9	10	13	14
type	anti-vibration bandage ACOP PL	backflow preventer CAR-PL	duct silencer AKU-COMP	duct clips SBF	ventilation duct VENTAL
RF/EC-125	ACOP PL 125	CAR-PL 125	AKU-COMP 125	SBF 60-135	VENTAL 127
RF/EC-160	ACOP PL 160	CAR-PL 160	AKU-COMP 160	SBF 60-165	VENTAL 165
RF/EC-200	ACOP PL 200	CAR-PL 200	AKU-COMP 200	SBF 60-215	VENTAL 203
RF/EC-250	ACOP PL 250	CAR-PL 250	AKU-COMP 250	SBF 60-325	VENTAL 254
RF/EC-315	ACOP PL 315	CAR-PL 315	AKU-COMP 315	SBF 60-325	VENTAL 315
RF/EC-355	-	-	-	-	-
RF/EC-400	-	-	-	-	-
RF/EC-450	-	-	-	-	-
RF/EC-500	-	-	-	-	-
RF/EC-560	-	-	-	-	-
RF/EC-630	-	-	-	-	-



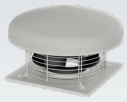
MOUNTING ACCESSORIES - Mounting type B



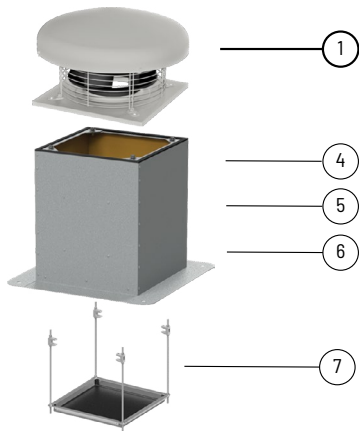
type	swing module U	flat roof up RSS	flat roof up RS	flat roof up RSA	mounting plate P
RF/EC-125	U 300	RSS 300	RS 300	RSA 300	P 300
RF/EC-160	U 300	RSS 300	RS 300	RSA 300	P 300
RF/EC-200	U 435	RSS 435	RS 435	RSA 435	P 435
RF/EC-250	U 435	RSS 435	RS 435	RSA 435	P 435
RF/EC-315	U 435	RSS 435	RS 435	RSA 435	P 435
RF/EC-355	U 560	RSS 560	RS 560	RSA 560	P 560
RF/EC-400	U 560	RSS 560	RS 560	RSA 560	P 560
RF/EC-450	U 630	RSS 630	RS 630	RSA 630	P 630
RF/EC-500	U 710	RSS 710	RS 710	RSA 710	P 710
RF/EC-560	U 905	RSS 905	RS 905	RSA 905	P 905
RF/EC-630	U 905	RSS 905	RS 905	RSA 905	P 905



type	backdraught dumper KZD	flexible connector ZDPO	stub pipe K	duct clips SBF	ventilation duct VENTAL
RF/EC-125	KZD 300	ZDPO 300	K 300	SBF 60-135	VENTAL 165
RF/EC-160	KZD 300	ZDPO 300	K 300	SBF 60-165	VENTAL 165
RF/EC-200	KZD 435	ZDPO 435	K 435	SBF 60-215	VENTAL 254
RF/EC-250	KZD 435	ZDPO 435	K 435	SBF 60-325	VENTAL 254
RF/EC-315	KZD 435	ZDPO 435	K 435	SBF 60-325	VENTAL 254
RF/EC-355	KZD 560-N	ZDPO 560	K 560	-	-
RF/EC-400	KZD 560-N	ZDPO 560	K 560	-	-
RF/EC-450	KZD 630-N	ZDPO 630	K 630	-	-
RF/EC-500	KZD 710-N	ZDPO 710	K 710	-	-
RF/EC-560	KZD 905-N	ZDPO 905	K 905	-	-
RF/EC-630	KZD 905-N	ZDPO 905	K 905	-	-



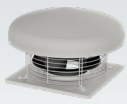
MOUNTING ACCESSORIES - Mounting type C



	1	4	5	6	7
type	flat roof up RSS	flat roof up RS	flat roof up RSA	flat roof up RSA	drip tray T
RF/EC-125	RSS 300	RS 300	RSA 300	RSA 300	T 300
RF/EC-160	RSS 300	RS 300	RSA 300	RSA 300	T 300
RF/EC-200	RSS 435	RS 435	RSA 435	RSA 435	T 435
RF/EC-250	RSS 435	RS 435	RSA 435	RSA 435	T 435
RF/EC-315	RSS 435	RS 435	RSA 435	RSA 435	T 435
RF/EC-355	RSS 560	RS 560	RSA 560	RSA 560	T 560
RF/EC-400	RSS 560	RS 560	RSA 560	RSA 560	T 560
RF/EC-450	RSS 630	RS 630	RSA 630	RSA 630	T 630
RF/EC-500	RSS 710	RS 710	RSA 710	RSA 710	T 710
RF/EC-560	RSS 905	RS 905	RSA 905	RSA 905	T 905
RF/EC-630	RSS 905	RS 905	RSA 905	RSA 905	T 905

Article numbers

43527200	U 300	43526510	RSS 300	43526140	RSA 630	40521020-01	CAR-PL 125	40521520	AKU-COMP 125	43526440	K 710
43527210	U 435	43526520	RSS 435	43526150	RSA 710	40521030-01	CAR-PL 160	40521530	AKU-COMP 160	43526450	K 905
43527220	U 560	43526530	RSS 560	43526160	RSA 905	40521040-01	CAR-PL 200	40521540	AKU-COMP 200	18520165-01	SBF 60-165
43527230	U 630	43526540	RSS 630	40521815	ACOP PL 125	40521050-01	CAR-PL 250	40521550	AKU-COMP 250	18520215-01	SBF 60-215
43527240	U 710	43526550	RSS 710	40521820	ACOP PL 160	40521060-01	CAR-PL 315	40521560	AKU-COMP 315	18520325-01	SBF 60-325
43527250	U 905	43526560	RSS 905	40521825	ACOP PL 200	43527300	KZD 300	43527400	ZDPO 300	11027127	VENTAL 127
43528610	PZK-125	43526711	RS 300	40521830	ACOP PL 250	43527310	KZD 435	43527410	ZDPO 435	11027165	VENTAL 165
43528620	PZK-160	43526020	RS 435	40521835	ACOP PL 315	43527320	KZD 560	43527420	ZDPO 560	11027203	VENTAL 203
43528630	PZK-200	43526030	RS 560	43526300	P 300	43527330	KZD 630	43527430	ZDPO 630	11027254	VENTAL 254
43528640	PZK-250	43526040	RS 630	43526310	P 435	43527340	KZD 710	43527440	ZDPO 710	11027315	VENTAL 315
43528650	PZK-315	43526050	RS 710	43526320	P 560	43527350	KZD 905	43527450	ZDPO 905	43527500	T 300
		43526060	RS 905	43526330	P 630			43526400	K 300	43527510	T 435
		43526110	RSA 300	43526340	P 710			43526410	K 435	43527520	T 560
		43526120	RSA 435	43526350	P 905			43526420	K 560	43527530	T 630
		43526130	RSA 560					43526430	K 630	43527540	T 710
										43527550	T 905



ELECTRICAL ACCESSORIES



type	wall thermostat	duct thermostat	duct thermostat	air quality sensor	humidistat	thyristor regulator
	TS	TK-1	TK-21	SQA	HIG-2	REB ECOWATT
RF/EC-125/H	TS	TK-1	TK-21	SQA	HIG-2	REB-ECOWATT
RF/EC-125/E	TS	TK-1	TK-21	SQA	HIG-2	REB-ECOWATT
RF/EC-160/L	TS	TK-1	TK-21	SQA	HIG-2	REB-ECOWATT
RF/EC-160/H	TS	TK-1	TK-21	SQA	HIG-2	REB-ECOWATT
RF/EC-200	TS	TK-1	TK-21	SQA	HIG-2	REB-ECOWATT
RF/EC-250/L	TS	TK-1	TK-21	SQA	HIG-2	REB-ECOWATT
RF/EC-250/H	TS	TK-1	TK-21	SQA	HIG-2	REB-ECOWATT
RF/EC-315	TS	TK-1	TK-21	SQA	HIG-2	REB-ECOWATT
RF/EC-315T	TS + DILM7-10	TK-1 + DILM7-10	TK-21 + DILM7-10	SQA + DILM7-10	HIG-2 + DILM7-10	REB-ECOWATT
RF/EC-355	TS + DILM7-10	-	TK-21 + DILM7-10	SQA + DILM7-10	HIG-2 + DILM7-10	REB ECOWATT
RF/EC-400	TS + DILM7-10	-	TK-21 + DILM7-10	SQA + DILM7-10	HIG-2 + DILM7-10	REB ECOWATT
RF/EC-450	TS + DILM7-10	-	TK-21 + DILM7-10	SQA + DILM7-10	HIG-2 + DILM7-10	REB ECOWATT
RF/EC-500	TS + DILM7-10	-	TK-21 + DILM7-10	SQA + DILM7-10	HIG-2 + DILM7-10	REB ECOWATT
RF/EC-560T	TS + DILM7-10	-	TK-21 + DILM7-10	SQA + DILM7-10	HIG-2 + DILM7-10	REB ECOWATT
RF/EC-630T	TS + DILM7-10	-	TK-21 + DILM7-10	SQA + DILM7-10	HIG-2 + DILM7-10	REB ECOWATT

Article numbers

91040997 DILM7-10

40025345 TS

40025320 TK-21

40025140 SQA

40025150 HIG-2

40025005 REB ECOWATT